

Victaulic® FireLock™ Installation-Ready™ Fittings No. 101, 102, 103, 143



No. 101



No. 102



No. 103



No. 143

1.0 PRODUCT DESCRIPTION

Function

- Installation-Ready™ Fittings for Fire Protection Systems.

Available Sizes

- 1 ¼ – 2 ½"/32 – 65 mm, and 76.1 mm

Pipe Material

- Carbon steel, Schedule 10, Schedule 40. For use with alternative materials please contact Victaulic.

Maximum Working Pressure

- Up to 365 psi/2517 kPa/25 BAR

Pipe Preparation

- Roll Grooved, Cut Grooved

2.0 CERTIFICATION/LISTINGS



ALWAYS REFER TO ANY NOTIFICATIONS AT THE END OF THIS DOCUMENT REGARDING PRODUCT INSTALLATION, MAINTENANCE OR SUPPORT.

System No.		Location	
Submitted By		Date	

Spec Section		Paragraph	
Approved		Date	

3.0 SPECIFICATIONS - MATERIAL

Fitting Housing: Ductile iron conforming to ASTM A536, Grade 65-45-12

Housing Coating:

Orange enamel (North America, Asia Pacific)

Red enamel (Europe)

Optional: Hot dipped galvanized

Gasket:

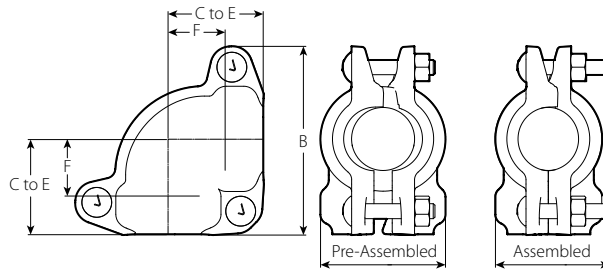
Grade “E” EPDM Type A Vic-Plus™ Gasket System

EPDM (Violet color code). FireLock products have been Listed by UL LLC and Approved by FM Approvals LLC for fire sprinkler services up to the rated working pressure using the Grade “E” Type A Vic-Plus™ Gasket System, requiring no field lubrication for most installation conditions.

Bolts/Nuts: Carbon steel oval neck track bolts meeting the physical and chemical requirements of ASTM A449 (imperial) and ISO 898-1 Class 9.8 (metric). Carbon steel hex nuts meeting the physical and chemical requirements of ASTM A563 Grade B (imperial) and ASTM A563M Class 9 (metric). Track bolts and hex nuts are zinc electroplated per ASTM B633 ZN/FE5, finish Type III (imperial) or Type II (metric).

4.0 DIMENSIONS

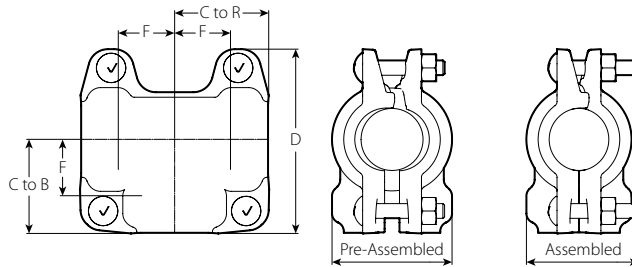
No. 101 90° Elbow



Size		Bolt/Nut		Dimensions					Weight
Nominal	Actual Outside Diameter	Qty.	Size	F Take Out	C to E	B	Pre-Assembled	Assembled	Approximate (Each)
inches DN	inches mm		inches mm	inches mm	inches mm	inches mm	inches mm	inches mm	lb kg
1 ¼ DN32	1.660 42.1	3	¾ x 2 M10 X 50	1.50 38	2.44 62	4.75 121	3.19 81	2.88 73	3.2 1.4
1 ½ DN40	1.900 48.3	3	¾ x 2 M10 X 50	1.56 40	2.56 65	5.000 127	3.50 89	3.06 78	3.7 1.7
2 DN50	2.375 60.3	3	7/16 x 2.75 M11 X 69	1.88 48	2.81 71	5.63 143	4.19 106	3.63 92	5.4 2.5
2 ½	2.875 73.0	3	7/16 x 2.75 M11 X 69	2.13 54	3.06 77	6.13 156	4.63 118	4.06 103	6.4 2.9
DN65	3.000 76.1	3	M11 x 69	2.19 56	3.13 80	6.19 157	4.75 121	4.19 106	6.6 3.0

4.1 DIMENSIONS

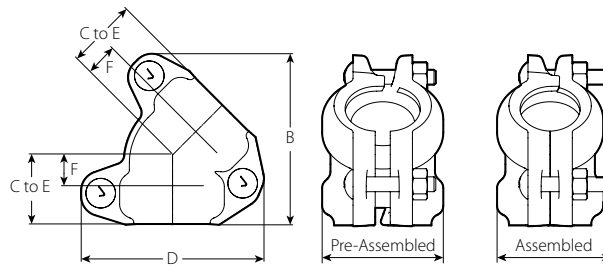
No. 102 Tee



Size		Bolt/Nut		Dimensions					Weight	
Nominal	Actual Outside Diameter	Qty.	Size	F Take Out	C to B	C to R	D	Pre-Assembled	Assembled	Approximate (Each)
inches DN	inches mm		inches mm	inches mm	inches mm	inches mm	inches mm	inches mm	inches mm	lb kg
1 ¼ DN32	1.660 42.4	4	¾ x 2 M10 X 50	1.50 38	2.44 62	2.44 62	4.75 121	3.19 81	2.88 73	4.2 1.9
1 ½ DN40	1.900 48.3	4	¾ x 2 M10 X 50	1.56 40	2.56 65	2.56 65	5.00 127	3.50 89	3.06 78	4.6 2.1
2 DN50	2.375 60.3	4	7/16 x 2.75 M11 X 69	1.88 48	2.88 73	2.88 73	5.50 140	4.19 106	3.63 92	6.4 2.9
2 ½	2.875 73.0	4	7/16 x 2.75 M11 X 69	2.13 54	3.13 80	3.13 80	6.00 152	4.63 118	4.06 103	7.5 3.4
DN65	3.000 76.1	4	M11 x 69	2.19 56	3.19 81	3.19 81	6.19 157	4.75 121	4.19 106	7.8 3.5

4.2 DIMENSIONS

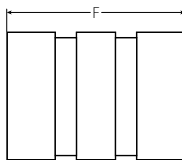
No. 103 45° Elbow



Size		Bolt/Nut		Dimensions						Weight	
Nominal	Actual Outside Diameter	Qty.	Size	F Take Out	C to E	B	D	Pre-Assembled	Assembled	Approximate (Each)	
inches DN	inches mm		inches mm	inches mm	inches mm	inches mm	inches mm	inches mm	inches mm	lb kg	
1 ¼ DN32	1.660 42.4	3	¾ x 2 M10 X 50	0.81 21	1.81 46	4.38 111	4.69 119	3.19 81	2.88 73	2.8 1.3	
1 ½ DN40	1.900 48.3	3	¾ x 2 M10 X 50	0.94 24	1.88 48	4.50 114	4.81 122	3.44 87	3.06 78	3.1 1.4	
2 DN50	2.375 60.3	3	7/16 x 2.75 M11 X 69	1.00 25	2.00 51	5.00 127	5.44 138	4.19 106	3.63 92	4.4 2.0	
2 ½	2.875 73.0	3	7/16 x 2.75 M11 X 69	1.13 29	2.06 52	5.38 135	5.94 151	4.63 117	4.06 103	4.9 2.2	
DN65	3.000 76.1	3	M11 x 69	1.13 29	2.13 54	5.50 140	6.13 156	4.75 121	4.19 106	5.1 2.3	

4.3 DIMENSIONS

No. 143 Close Nipple (fitting to fitting connections)



Size		Dimensions	Weight
Nominal	Actual Outside Diameter	Takeout F	Approximate (Each)
inches DN	inches mm	inches mm	lb kg
1 ¼ DN32	1.660 42.4	2.375 60	0.4 0.2
1 ½ DN40	1.900 48.3	2.375 60	0.5 0.2
2 DN50	2.375 60.3	2.375 60	0.7 0.3
2 ½	2.875 73.0	2.375 60	1.1 0.5
DN65	3.000 76.1	2.375 60	1.2 0.5

5.0 PERFORMANCE

Friction Flow Data

Size		Flow Data - Frictional Resistance			
		Elbows		No. 102 Straight Tee	
Nominal inches DN	Actual Outside Diameter inches mm	No. 101 90° Elbow ft m	No. 103 45° Elbow ft m	Branch ft m	Run ft m
1 ¼ DN32	1.660 42.4	2.8 0.9	0.4 0.1	3.1 0.9	0.6 0.2
1 ½ DN40	1.900 48.3	2.9 0.9	0.6 0.2	4.0 1.2	0.7 0.2
2 DN50	2.375 60.3	3.0 0.9	1.1 0.3	5.8 1.8	1.1 0.3
2 ½	2.875 73	3.1 0.9	1.5 0.5	7.6 2.3	1.4 0.4
DN65	3.000 76.1	3.1 0.9	1.6 0.5	8.1 2.5	1.5 0.5

Maximum Working Pressure

Size		cULus		FM		Vds	LPCB
Nominal inches DN	Actual Outside Diameter inches mm	Sch.10 psi kPa	Sch.40 psi kPa	Sch.10 psi kPa	Sch.40 psi kPa	psi kPa	psi kPa
1 ¼ DN32	1.660 42.4	300 2068	300 2068	365 2517	365 2517	363 2500	363 2500
1 ½ DN40	1.900 48.3	300 2068	300 2068	365 2517	365 2517	363 2500	363 2500
2 DN50	2.375 60.3	300 2068	300 2068	365 2517	365 2517	363 2500	363 2500
2 ½	2.875 73	300 2068	300 2068	365 2517	365 2517	-	363 2500
DN65	3.000 76.1	300 ¹ 2068	N/A	365 2517	N/A	363 2500	363 2500

¹ cULus Listed for EN 10217 2.9mm pipe wall

6.0 NOTIFICATIONS

Not applicable – contact Victaulic with any questions.

7.0 REFERENCE MATERIALS

Not applicable – contact Victaulic with any questions.

User Responsibility for Product Selection and Suitability

Each user bears final responsibility for making a determination as to the suitability of Victaulic products for a particular end-use application, in accordance with industry standards and project specifications, and the applicable building codes and related regulations as well as Victaulic performance, maintenance, safety, and warning instructions. Nothing in this or any other document, nor any verbal recommendation, advice, or opinion from any Victaulic employee, shall be deemed to alter, vary, supersede, or waive any provision of Victaulic Company's standard conditions of sale, installation guide, or this disclaimer.

Intellectual Property Rights

No statement contained herein concerning a possible or suggested use of any material, product, service, or design is intended, or should be construed, to grant any license under any patent or other intellectual property right of Victaulic or any of its subsidiaries or affiliates covering such use or design, or as a recommendation for the use of such material, product, service, or design in the infringement of any patent or other intellectual property right. The terms "Patented" or "Patent Pending" refer to design or utility patents or patent applications for articles and/or methods of use in the United States and/or other countries.

Note

This product shall be manufactured by Victaulic or to Victaulic specifications. All products to be installed in accordance with current Victaulic installation/assembly instructions. Victaulic reserves the right to change product specifications, designs and standard equipment without notice and without incurring obligations.

Installation

Reference should always be made to the Victaulic installation handbook or installation instructions of the product you are installing. Handbooks are included with each shipment of Victaulic products, providing complete installation and assembly data, and are available in PDF format on our website at www.victaulic.com.

Warranty

Refer to the Warranty section of the current Price List or contact Victaulic for details.

Trademarks

Victaulic and all other Victaulic marks are the trademarks or registered trademarks of Victaulic Company, and/or its affiliated entities, in the U.S. and/or other countries.