

Victaulic Grooved Couplings

Performance Data for Stainless Steel Pipe



17.09

1.0 PERFORMANCE

Performance on ANSI Wall Thicknesses



Style 89
Rigid Coupling



Style 07
Zero-Flex™ Rigid Coupling



Style 107N
QuickVic™ Rigid Coupling

Size		Pipe Wall Thickness		Groove Type	Style 89		Style 07		Style 107N	
Nominal inches DN	Actual Outside Diameter inches mm	inches mm	ANSI Schedule Number		Maximum Working Pressure psi kPa	Maximum End Load Lbs. N	Maximum Working Pressure psi kPa	Maximum End Load Lbs. N	Maximum Working Pressure psi kPa	Maximum End Load Lbs. N
1 DN25	1.315 33.7	0.179 4.6	80S	C	—	—	750 5171	1019 4531	—	—
		0.133 3.4	40S	Std/C	—	—	750 5171	1019 4531	—	—
		0.109 2.8	10S	RX	—	—	500 3447	680 3023	—	—
		0.065 1.7	5S	RX	—	—	400 2758	543 2416	—	—
1 ¼ DN32	1.660 42.4	0.191 4.9	80S	C	—	—	750 5171	1623 7220	—	—
		0.140 3.6	40S	Std/C	—	—	750 5171	1623 7220	—	—
		0.109 2.8	10S	RX	—	—	500 3447	1082 4813	—	—
		0.065 1.7	5S	RX	—	—	400 2758	866 3851	—	—

— = Sizes not available

NR = Not rated. Contact Victaulic for more information.

RX= Roll Set for light wall stainless steel pipe marked with the prefix "RX"

Std= Standard roll set marked with the prefix "R"

C= Cut groove

NOTES

- For pressure ratings on wall thicknesses not mentioned please contact Victaulic.
- Performance data is for ANSI Types 304/304L and 316/316L stainless steel pipe with wall thicknesses from Schedule 5S to Schedule 80S.

ALWAYS REFER TO ANY NOTIFICATIONS AT THE END OF THIS DOCUMENT REGARDING PRODUCT INSTALLATION, MAINTENANCE OR SUPPORT.

System No.		Location	
Submitted By		Date	

Spec Section		Paragraph	
Approved		Date	



1.0 PERFORMANCE (CONTINUED)

Performance on ANSI Wall Thicknesses



Style 89
Rigid Coupling



Style 07
Zero-Flex™ Rigid Coupling



Style 107N
QuickVic™ Rigid Coupling

Size		Pipe Wall Thickness		Groove Type	Style 89		Style 07		Style 107N	
Nominal inches DN	Actual Outside Diameter inches mm	inches mm	ANSI Schedule Number		Maximum Working Pressure psi kPa	Maximum End Load Lbs. N	Maximum Working Pressure psi kPa	Maximum End Load Lbs. N	Maximum Working Pressure psi kPa	Maximum End Load Lbs. N
1 1/2 DN40	1.900 48.3	0.200 5.1	80S	C	—	—	750 5171	2126 9459	—	—
		0.145 3.7	40S	Std/C	—	—	750 5171	2126 9459	—	—
		0.109 2.8	10S	RX	—	—	500 3447	1418 6306	—	—
		0.065 1.7	5S	RX	—	—	400 2758	1134 5045	—	—
2 DN50	2.375 60.3	0.218 5.5	80S	C	750 5171	3323 14780	750 5171	3323 14780	600 4137	2658 11823
		0.154 3.9	40S	Std/C	750 5171	3323 14780	750 5171	3323 14780	600 4137	2658 11823
		0.109 2.8	10S	RX	500 3447	2215 9853	500 3447	2215 9853	300 2068	1329 5912
		0.065 1.7	5S	RX	325 2241	1440	325 2241	1440 6405	200 1379	886 3941
2 1/2	2.875 73.0	0.276 7.0	80S	C	750 5171	4869 21658	750 5171	4869 21658	600 4137	3895 17325
		0.203 5.2	40S	Std/C	750 5171	4869 21658	750 5171	4869 21658	600 4137	3895 17325
		0.120 3.1	10S	RX	500 3447	3246 14438	500 3447	3246 14438	300 2068	1948 8663
		0.083 2.1	5S	RX	325 2241	2110 9386	325 2241	2110 9386	200 1379	1298 5775
3 DN80	3.500 88.9	0.300 7.6	80S	C	750 5171	7216 32098	750 5171	7216 32089	600 4137	5773 25677
		0.216 5.5	40S	Std/C	750 5171	7216 32098	750 5171	7216 32089	600 4137	5773 25677
		0.120 3.1	10S	RX	500 3447	4814 21415	500 3447	4811 21398	300 2068	2886 12838
		0.083 2.1	5S	RX	325 2241	3127 13910	325 2241	3127 13910	200 1379	1924 8559

— = Sizes not available

NR = Not rated. Contact Victaulic for more information.

RX= Roll Set for light wall stainless steel pipe marked with the prefix "RX"

Std= Standard roll set marked with the prefix "R"

C= Cut groove

NOTES

- For pressure ratings on wall thicknesses not mentioned please contact Victaulic.
- Performance data is for ANSI Types 304/304L and 316/316L stainless steel pipe with wall thicknesses from Schedule 5S to Schedule 80S.

1.0 PERFORMANCE (CONTINUED)

Performance on ANSI Wall Thicknesses



Style 89
Rigid Coupling



Style 07
Zero-Flex™ Rigid Coupling



Style 107N
QuickVic™ Rigid Coupling

Size		Pipe Wall Thickness		Groove Type	Style 89		Style 07		Style 107N	
Nominal inches DN	Actual Outside Diameter inches mm	inches mm	ANSI Schedule Number		Maximum Working Pressure psi kPa	Maximum End Load Lbs. N	Maximum Working Pressure psi kPa	Maximum End Load Lbs. N	Maximum Working Pressure psi kPa	Maximum End Load Lbs. N
4 DN100	4.500 114.3	0.337 8.6	80S	C	750 5171	11928 53059	750 5171	11928 53059	600 4137	9543 42445
		0.237 6.0	40S	Std/C	750 5171	11928 53059	750 5171	11928 53059	600 4137	9543 42445
		0.120 3.1	10S	RX	400 2758	6362 28298	400 2758	6362 28298	300 2068	4771 21223
		0.083 2.1	5S	RX	250 1725	3979 17100	250 1725	3979 17700	200 1379	3181 14148
5	5.563 141.3	0.375 9.5	80S	C	750 5171	18229 81087	750 5171	18229 81087	600 4137	14583 64867
		0.258 6.6	40S	Std/C	750 5171	18229 81087	500 3447	12162 54099	600 4137	14583 64867
		0.134 3.4	10S	RX	300 2065	7280 32381	300 2065	7280 32381	300 2068	7292 32432
		0.109 2.8	5S	RX	275 1896	6684 29732	200 1379	4861 21623	200 1379	4861 21622
6 DN150	6.625 168.3	0.432 11.0	80S	C	750 5171	25854 115003	700 4825	24123 107306	600 4137	20683 91998
		0.280 7.1	40S	Std/C	750 5171	25854 115003	450 3100	15499 68943	600 4137	20683 91998
		0.134 3.4	10S	RX	300 2065	10324 45925	200 1379	6894 30667	300 2068	10321 46000
		0.110 2.8	5S	RX	250 1724	8618 38334	125 862	4310 19171	200 1379	6894 30666
8 DN200	8.625 219.1	0.322 8.2	40S	C	600 4136	35049 155903	600 4136	35065 155935	400 2758	23371 103952
		0.322 8.2	40S	Std	600 4136	35049 155903	400 2758	23371 103957	400 2758	23371 103952
		0.150 3.8	10S	RX	300 2065	17499 77838	125 862	7305 32492	150 1034	8764 38982
		0.110 2.8	5S	RX	200 1379	11686 51980	75 517	4381 19488	125 862	7303 32485

— = Sizes not available

NR = Not rated. Contact Victaulic for more information.

RX= Roll Set for light wall stainless steel pipe marked with the prefix "RX"

Std= Standard roll set marked with the prefix "R"

C= Cut groove

NOTES

- For pressure ratings on wall thicknesses not mentioned please contact Victaulic.
- Performance data is for ANSI Types 304/304L and 316/316L stainless steel pipe with wall thicknesses from Schedule 5S to Schedule 80S.

1.0 PERFORMANCE (CONTINUED)

Performance on ANSI Wall Thicknesses



Style 89
Rigid Coupling



Style 07
Zero-Flex™ Rigid Coupling



Style 107N
QuickVic™ Rigid Coupling

Size		Pipe Wall Thickness		Groove Type	Style 89		Style 07		Style 107N	
Nominal inches DN	Actual Outside Diameter inches mm	inches mm	ANSI Schedule Number		Maximum Working Pressure psi kPa	Maximum End Load Lbs. N	Maximum Working Pressure psi kPa	Maximum End Load Lbs. N	Maximum Working Pressure psi kPa	Maximum End Load Lbs. N
10 DN250	10.750 273.0	0.365 9.3	40S	C	600 4136	54446 242188	500 3447	45416 202019	300 2068	27229 121114
		0.365 9.3	40S	Std	600 4136	54446 242188	325 2241	29501 131224	300 2068	27229 121114
		0.165 4.2	10S	RX	300 2065	27184 120918	75 517	6806 30274	100 689	9076 40371
		0.134 3.4	5S	RX	250 1724	22691 100933	50 345	4542 20202	75 517	6807 30278
12 DN300	12.750 323.9	0.375 9.5	40S	C	600 4136	76590 340687	400 2758	51071 227172	300 2068	38303 170371
		0.375 9.5	40S	Std	600 4136	76590 340687	250 1724	31943 142090	300 2068	38303 170371
		0.180 4.6	10S	RX	300 2065	38239 170097	125 862	15962 71004	100 689	12768 56790
		0.156 4.0	5S	RX	200 1379	25536 113590	75 517	9574 42586	75 517	9576 42593

— = Sizes not available

NR = Not rated. Contact Victaulic for more information.

RX= Roll Set for light wall stainless steel pipe marked with the prefix "RX"

Std= Standard roll set marked with the prefix "R"

C= Cut groove

NOTES

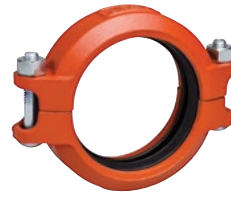
- For pressure ratings on wall thicknesses not mentioned please contact Victaulic.
- Performance data is for ANSI Types 304/304L and 316/316L stainless steel pipe with wall thicknesses from Schedule 5S to Schedule 80S.

1.0 PERFORMANCE (CONTINUED)

Performance on ANSI Wall Thicknesses



Style 77
Flexible Coupling



Style 75
Flexible Coupling



Style 177N
QuickVic™ Flexible Coupling

Size		Pipe Wall Thickness		Groove Type	Style 77		Style 75		Style 177N	
Nominal inches DN	Actual Outside Diameter inches mm	inches mm	ANSI Schedule Number		Maximum Working Pressure psi kPa	Maximum End Load Lbs. N	Maximum Working Pressure psi kPa	Maximum End Load Lbs. N	Maximum Working Pressure psi kPa	Maximum End Load Lbs. N
¾ DN20	1.050 26.7	0.154 3.9	80S	C	750 5171	649 2889	—	—	—	—
		0.113 2.9	40S	Std/C	750 5171	649 2889	—	—	—	—
		0.083 2.1	10S	RX	500 3447	433 1927	—	—	—	—
		0.065 1.6	5S	RX	500 3447	433 1927	—	—	—	—
1 DN25	1.315 33.4	0.179 4.9	80S	C	750 5171	1019 4531	—	—	—	—
		0.133 3.6	40S	Std/C	750 5171	1019 4531	—	—	—	—
		0.109 2.8	10S	RX	500 3447	680 3023	—	—	—	—
		0.065 1.7	5S	RX	400 2758	543 2416	—	—	—	—
1 ¼ DN32	1.660 42.2	0.191 4.9	80S	C	750 5171	1623 7220	—	—	—	—
		0.140 3.6	40S	Std/C	750 5171	1623 7220	—	—	—	—
		0.109 2.8	10S	RX	500 3447	1083 4817	—	—	—	—
		0.065 1.7	5S	RX	400 2758	866 3851	—	—	—	—
1 ½ DN40	1.900 48.3	0.200 5.1	80S	C	750 5171	2126 9459	500 3447	1419 6311	—	—
		0.145 3.7	40S	Std/C	750 5171	2126 9459	500 3447	1419 6311	—	—
		0.109 2.8	10S	RX	500 3447	1419 6311	500 3447	1419 6311	—	—
		0.065 1.7	5S	RX	400 2758	1134 5045	400 2758	1134 5045	—	—

— = Sizes not available

NR = Not rated. Contact Victaulic for more information.

RX= Roll Set for light wall stainless steel pipe marked with the prefix "RX"

Std= Standard roll set marked with the prefix "R"

C= Cut groove

NOTES

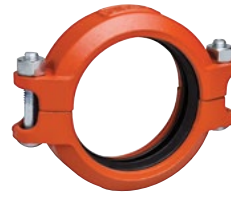
- For pressure ratings on wall thicknesses not mentioned please contact Victaulic.
- Performance data is for ANSI Types 304/304L and 316/316L stainless steel pipe with wall thicknesses from Schedule 5S to Schedule 80S.

1.0 PERFORMANCE (CONTINUED)

Performance on ANSI Wall Thicknesses



Style 77
Flexible Coupling



Style 75
Flexible Coupling



Style 177N
QuickVic™ Flexible Coupling

Size		Pipe Wall Thickness		Groove Type	Style 77		Style 75		Style 177N	
Nominal inches DN	Actual Outside Diameter inches mm	inches mm	ANSI Schedule Number		Maximum Working Pressure psi kPa	Maximum End Load Lbs. N	Maximum Working Pressure psi kPa	Maximum End Load Lbs. N	Maximum Working Pressure psi kPa	Maximum End Load Lbs. N
2 DN50	2.375 60.3	0.218 5.5	80S	C	750 5171	3323 14780	500 3447	2217 9861	750 5171	3323 14779
		0.154 3.9	40S	Std/C	750 5171	3323 14780	500 3447	2217 9861	750 5171	3323 14779
		0.109 2.8	10S	RX	500 3447	2217 9861	400 2758	1772 7882	500 3447	2215 9853
		0.065 1.7	5S	RX	325 2241	1440 6405	250 1724	1108 4930	325 2241	1440 6404
2½	2.875 73.0	0.276 7.0	80S	C	750 5171	4869 21658	500 3447	3248 14449	700 4826	4544 20213
		0.203 5.2	40S	Std/C	750 5171	4869 21658	500 3447	3248 14449	700 4826	4544 20213
		0.120 3.1	10S	RX	500 3447	3248 14449	400 2758	2597 11551	400 2758	2597 11550
		0.083 2.1	5S	RX	325 2241	2110 9386	250 1724	1624 7225	300 2068	1948 8663
3 DN80	3.500 88.9	0.300 7.6	80S	C	750 5171	7216 32098	500 3447	4814 21415	700 4826	6735 29956
		0.216 5.5	40S	Std/C	750 5171	7216 32098	500 3447	4814 21415	700 4826	6735 29956
		0.120 3.1	10S	RX	500 3447	4814 21415	400 2758	3848 17119	400 2758	3848 17118
		0.083 2.1	5S	RX	325 2241	3127 13910	250 1724	2407 10707	300 2068	2886 12838
3½ DN90	4.000 101.6	0.318 8.1	80S	C	750 5171	9425 41923	500 3447	6288 27970	—	—
		0.226 5.7	40S	Std/C	750 5171	9425 41923	500 3447	6288 27970	—	—
		0.120 3.1	10S	RX	450 3100	5650 25133	350 2410	4392 19539	—	—
		0.083 2.1	5S	RX	300 2065	3764 16742	225 1551	2827 12574	—	—

— = Sizes not available

NR = Not rated. Contact Victaulic for more information.

RX= Roll Set for light wall stainless steel pipe marked with the prefix "RX"

Std= Standard roll set marked with the prefix "R"

C= Cut groove

NOTES

- For pressure ratings on wall thicknesses not mentioned please contact Victaulic.
- Performance data is for ANSI Types 304/304L and 316/316L stainless steel pipe with wall thicknesses from Schedule 5S to Schedule 80S.

1.0 PERFORMANCE (CONTINUED)

Performance on ANSI Wall Thicknesses



Style 77
Flexible Coupling



Style 75
Flexible Coupling



Style 177N
QuickVic™ Flexible Coupling

Size		Pipe Wall Thickness		Groove Type	Style 77		Style 75		Style 177N	
Nominal inches DN	Actual Outside Diameter inches mm	inches mm	ANSI Schedule Number		Maximum Working Pressure psi kPa	Maximum End Load Lbs. N	Maximum Working Pressure psi kPa	Maximum End Load Lbs. N	Maximum Working Pressure psi kPa	Maximum End Load Lbs. N
4 DN100	4.500 114.3	0.337 8.6	80S	C	750 5171	11928 53059	500 3447	7958 35400	600 4137	9543 42445
		0.237 6.0	40S	Std/C	750 5171	11928 53059	500 3447	7958 35400	600 4137	9543 42445
		0.120 3.1	10S	RX	450 3100	6362 28298	300 2065	4763 21189	300 2068	4771 21223
		0.083 2.1	5S	RX	250 1724	3979 17700	200 1379	3181 14149	250 1724	3976 17686
5	5.563 141.3	0.375 9.5	80S	C	750 5171	18229 81087	450 3100	10928 48611	N/R	
		0.258 6.6	40S	Std/C	500 3447	12162 54099	300 2065	7280 32381		
		0.134 3.4	10S	RX	300 2065	7280 32381	200 1379	4861 21623		
		0.110 2.8	5S	RX	200 1379	4861 21623	125 862	3039 13517		
6 DN150	6.625 168.3	0.280 7.1	40S	C	750 5171	25854 115003	450 3100	15499 68943	500 3447	17236 76665
		0.280 7.1	40S	Std	500 3447	17249 76727	300 2065	10324 45925	500 3447	17236 76665
		0.134 3.4	10S	RX	200 1379	6875 30579	125 862	4310 19171	150 1034	5171 22999
		0.110 2.8	5S	RX	125 862	4310 19171	75 517	2585 11498	100 689	3447 15333
8 DN200	8.625 219.1	0.323 8.2	40S	C	600 4137	35056 155935	450 3100	26269 116852	400 2758	23371 103952
		0.323 8.2	40S	Std	400 2758	23371 103957	300 2065	17499 77838	400 2758	23371 103952
		0.150 3.8	10S	RX	125 862	7305 32492	75 517	4381 19488	125 862	7303 32485
		0.110 2.8	5S	RX	75 517	4381 19488	50 345	2924 13004	75 517	4382 19491

— = Sizes not available

NR = Not rated. Contact Victaulic for more information.

RX= Roll Set for light wall stainless steel pipe marked with the prefix "RX"

Std= Standard roll set marked with the prefix "R"

C= Cut groove

NOTES

- For pressure ratings on wall thicknesses not mentioned please contact Victaulic.
- Performance data is for ANSI Types 304/304L and 316/316L stainless steel pipe with wall thicknesses from Schedule 5S to Schedule 80S.

1.0 PERFORMANCE (CONTINUED)

Performance on ANSI Wall Thicknesses



Style 77
Flexible Coupling



Style 75
Flexible Coupling



Style 177N
QuickVic™ Flexible Coupling

Size		Pipe Wall Thickness		Groove Type	Style 77		Style 75		Style 177N	
Nominal inches DN	Actual Outside Diameter inches mm	inches mm	ANSI Schedule Number		Maximum Working Pressure psi kPa	Maximum End Load Lbs. N	Maximum Working Pressure psi kPa	Maximum End Load Lbs. N	Maximum Working Pressure psi kPa	Maximum End Load Lbs. N
10 DN250	10.750 273.0	0.366 9.3	40S	C	600 4137	54458 242238	—	—	—	—
		0.366 9.3	40S	Std	400 2758	36305 161492	—	—	—	—
		0.165 4.2	10S	RX	125 862	11347 50475	—	—	—	—
		0.134 3.4	5S	RX	75 517	6806 30274	—	—	—	—
12 DN300	12.750 323.9	0.375 9.5	40S	C	600 4137	76606 340758	—	—	—	—
		0.375 9.5	40S	Std	400 2758	51071 227172	—	—	—	—
		0.181 4.6	10S	RX	125 862	15962 71004	—	—	—	—
		0.156 4.0	5S	RX	75 517	9574 42586	—	—	—	—

— = Sizes not available

NR = Not rated. Contact Victaulic for more information.

RX= Roll Set for light wall stainless steel pipe marked with the prefix "RX"

Std= Standard roll set marked with the prefix "R"

C= Cut groove

NOTES

- For pressure ratings on wall thicknesses not mentioned please contact Victaulic.
- Performance data is for ANSI Types 304/304L and 316/316L stainless steel pipe with wall thicknesses from Schedule 5S to Schedule 80S.

1.0 PERFORMANCE (CONTINUED)

Performance on ANSI Wall Thicknesses



Size		Pipe Wall Thickness		Groove Type	Style 78		Style 791		Style 741		Style 743	
Nominal inches DN	Actual Outside Diameter inches mm	inches mm	ANSI Schedule Number		Maximum Working Pressure psi kPa	Maximum End Load Lbs. N	Maximum Working Pressure psi kPa	Maximum End Load Lbs. N	Maximum Working Pressure psi kPa	Maximum End Load Lbs. N	Maximum Working Pressure psi kPa	Maximum End Load Lbs. N
2 DN50	2375 60.3	0.218 5.6	80S	C	300 2065	1330 5920	300 2065	1330 5920	275 1896	1218 5419	400 2750	1775 7900
		0.154 3.9	40S	Std/C	300 2065	1330 5920	300 2065	1330 5920	275 1896	1218 5419	400 2750	1775 7900
		0.109 2.8	10S	RX	300 2065	1330 5920	300 2065	1330 5920	275 1896	1218 5419	400 2750	1775 7900
		0.065 1.7	5S	RX	200 1375	885 3940	200 1375	885 3940	175 1207	775 3449	250 1725	250 1725
2½	2.875 73.0	0.276 7.0	80S	C	300 2065	1950 8680	300 2065	1950 8680	275 1896	1785 7941	400 2750	2600 11670
		0.203 5.2	40S	Std/C	300 2065	1950 8680	300 2065	1950 8680	275 1896	1785 7941	400 2750	2600 11670
		0.120 3.1	10S	RX	300 2065	1950 8680	300 2065	1950 8680	275 1896	1785 7941	400 2750	2600 11670
		0.083 2.1	5S	RX	200 1375	1300 5785	200 1375	1300 5785	175 1207	1136 5053	250 1725	1620 7210
3 DN80	3.500 88.9	0.300 7.6	80S	C	300 2065	2885 12840	300 2065	2885 12840	275 1896	2646 11769	400 2750	3850 17135
		0.216 5.5	40S	Std/C	300 2065	2885 12840	300 2065	2885 12840	275 1896	2646 11769	400 2750	3850 17135
		0.120 3.1	10S	RX	300 2065	2885 12840	300 2065	2885 12840	275 1896	2646 11769	400 2750	3850 17135
		0.083 2.1	5S	RX	200 1375	1925 8565	200 1375	1925 8565	175 1207	1684 7489	250 1725	2400 10680
4 DN100	4.500 114.3	0.337 8.6	80S	C	300 2065	4770 21225	300 2065	4770 21225	275 1896	4374 19454	300 2065	4770 21225
		0.237 6.0	40S	Std/C	300 2065	4770 21225	300 2065	4770 21225	275 1896	4374 19454	300 2065	4770 21225
		0.120 3.1	10S	RX	175 1206	2785 12395	175 1206	2785 12395	275 1896	4374 19454	275 1896	4375 19470
		0.083 2.1	5S	RX	100 690	1590 7075	100 690	1590 7075	175 1207	2783 12380	175 1206	2785 12395

— = Sizes not available

NR = Not rated. Contact Victaulic for more information.

RX= Roll Set for light wall stainless steel pipe marked with the prefix "RX"

Std= Standard roll set marked with the prefix "R"

C= Cut groove

¹ Discontinued April 2019.

NOTES

- For pressure ratings on wall thicknesses not mentioned please contact Victaulic.
- Performance data is for ANSI Types 304/304L and 316/316L stainless steel pipe with wall thicknesses from Schedule 5S to Schedule 80S.

1.0 PERFORMANCE (CONTINUED)

Performance on ANSI Wall Thicknesses



Size		Pipe Wall Thickness		Groove Type	Style 78		Style 791		Style 741		Style 743	
Nominal inches DN	Actual Outside Diameter inches mm	inches mm	ANSI Schedule Number		Maximum Working Pressure psi kPa	Maximum End Load Lbs. N	Maximum Working Pressure psi kPa	Maximum End Load Lbs. N	Maximum Working Pressure psi kPa	Maximum End Load Lbs. N	Maximum Working Pressure psi kPa	Maximum End Load Lbs. N
5	5.563 141.3	0.375 9.5	80S	C	300 2065	7290 32440	—	—	250 1724	6076 27029	300 2065	7290 32440
		0.260 6.6	40S	Std/C	200 1375	4860 21625	—	—	250 1724	6076 27029	250 1725	6075 27035
		0.134 3.4	10S	RX	125 862	3038 13520	—	—	200 1379	4861 21623	200 1375	4860 21625
		0.110 2.8	5S	RX	75 517	1825 8120	—	—	125 862	3039 13517	125 862	3040 13530
6 DN150	6.625 168.3	0.280 7.11	40S	C	300 2065	10350 46055	300 2065	10350 46055	250 1724	8618 38334	300 2065	10350 46055
		0.280 7.11	40S	Std	200 1375	6895 30685	200 1375	6895 30685	150 1034	5170 22996	200 1375	6895 30685
		0.134 3.40	10S	RX	100 690	3450 15355	100 690	3450 15355	125 862	4310 19171	125 862	4310 19180
		0.109 2.77	5S	RX	65 448	2240 9970	65 448	2240 9970	75 517	2585 11500	75 517	2585 11505
8 DN200	8.625 219.1	0.322 8.18	40S	C	300 2065	17525 77985	300 2065	17525 77985	200 1379	11685 51978	250 1725	14600 64970
		0.322 8.18	40S	Std	200 1375	11685 52000	200 1375	11685 52000	125 862	7305 32492	150 1034	8765 39005
		0.148 3.76	10S	RX	50 345	2920 12995	50 345	2920 12995	N/R		N/R	
		0.109 2.77	5S	RX	30 207	1755 7810	30 207	1755 7810				
10 DN250	10.750 273.0	0.365 9.3	40S	C	—	—	—	—	200 1379	18153 80746	250 1725	22700 101015
		0.365 9.3	40S	Std	—	—	—	—	125 862	11347 50475	150 1034	13615 60585
12 DN300	12.750 323.9	0.375 9.5	40S	C	—	—	—	—	200 1379	25535 113586	250 1725	31900 141955
		0.375 9.5	40S	Std	—	—	—	—	125 862	15962 71004	150 1034	19150 85220

— = Sizes not available

NR = Not rated. Contact Victaulic for more information.

RX= Roll Set for light wall stainless steel pipe marked with the prefix "RX"

Std= Standard roll set marked with the prefix "R"

C= Cut groove

¹ Discontinued April 2019.

NOTES

- For pressure ratings on wall thicknesses not mentioned please contact Victaulic.
- Performance data is for ANSI Types 304/304L and 316/316L stainless steel pipe with wall thicknesses from Schedule 5S to Schedule 80S.

1.0 PERFORMANCE (CONTINUED)

Performance on ANSI Wall Thicknesses



Style W89AGS
Rigid Coupling



Style W07AGS
Rigid Coupling



Style W77AGS
Flexible Coupling

Size		Pipe Wall Thickness		Groove Type	Style W89		Style W07		Style W77	
Nominal inches DN	Actual Outside Diameter inches mm	inches mm	ANSI Schedule Number		Maximum Working Pressure psi kPa	Maximum End Load Lbs. N	Maximum Working Pressure psi kPa	Maximum End Load Lbs. N	Maximum Working Pressure psi kPa	Maximum End Load Lbs. N
14 DN350	14.000 355.6	0.188 4.8	10S	RWX	300 2065	46200 205590	150 1034	23091 102713	150 1034	23091 102713
16 DN400	16.000 406.4	0.188 4.8	10S	RWX	300 2065	60320 268424	150 1034	30159 134155	150 1034	30159 134155
18 DN450	18.000 457.0	0.188 4.8	10S	RWX	300 2065	76350 339758	150 1034	38170 169790	150 1034	38170 169790
20 DN500	20.000 508.0	0.218 5.5	10S	RWX	300 2065	94250 419413	150 1034	47124 209618	150 1034	47124 209618
22 DN550	22.000 559.0	0.218 5.5	10S	RWX	300 2065	114000 507080	150 1034	57020 253637	150 1034	57020 253637
24 DN600	24.000 610.0	0.250 6.4	10S	RWX	300 2065	135700 603865	150 1034	67858 301849	150 1034	67858 301849

RX= Roll Set for light wall stainless steel pipe marked with the prefix "RX"

Std= Standard roll set marked with the prefix "R"

C= Cut groove

NOTES

- For pressure ratings on wall thicknesses not mentioned please contact Victaulic.
- Performance data is for ANSI Types 304/304L and 316/316L stainless steel pipe with wall thicknesses from Schedule 5S to Schedule 80S.

1.2 PERFORMANCE

Performance on ISO Wall Thicknesses

Within this section you'll find performance data for ductile iron ISO sized couplings ranging from 20 – 300mm/¾ – 12", for use on ISO Types 304/304L and 316/316L stainless steel pipe with wall thicknesses from 1.6 – 12.5mm/0.063 – 0.492", depending on the pipe OD in question.



Style 89
Rigid Coupling



Style 07
Zero-Flex™
Rigid Coupling



Style 107N
QuickVic™
Rigid Coupling



Style 741
Vic-Flange Adapter

Size		Pipe Wall Thickness	Groove Type	Style 89		Style 07		Style 107N		Style 741	
Nominal DN inches	Actual Outside Diameter mm inches			Maximum Working Pressure kPa psi	Maximum End Load N Lbs.	Maximum Working Pressure kPa psi	Maximum End Load N Lbs.	Maximum Working Pressure kPa psi	Maximum End Load N Lbs.	Maximum Working Pressure kPa psi	Maximum End Load N Lbs.
DN25 1	33.7 1.315	4.5 0.177	C	—	—	5171 750	4531 1019	—	—	—	—
		3.2 0.126	Std	—	—	4313 625	3779 849	—	—	—	—
		2.6 0.102	RX	—	—	3275 475	2870 645	—	—	—	—
		2.3 0.091	RX	—	—	3100 450	2719 611	—	—	—	—
		2.0 0.079	RX	—	—	2930 425	2568 577	—	—	—	—
		1.6 0.063	RX	—	—	2758 400	2416 543	—	—	—	—
DN32 1¼	42.4 1.660	5.0 0.197	C	—	—	5171 750	7220 1623	—	—	—	—
		3.6 0.142	Std/C	—	—	5171 750	7220 1623	—	—	—	—
		3.2 0.126	Std	—	—	4313 625	6017 1353	—	—	—	—
		2.6 0.102	RX	—	—	3275 475	4573 1028	—	—	—	—
		2.0 0.079	RX	—	—	2930 425	4091 920	—	—	—	—
		1.6 0.063	RX	—	—	2758 400	3851 866	—	—	—	—

— = Sizes not available

NR = Not rated. Contact Victaulic for more information.

RX= Roll Set for light wall stainless steel pipe marked with the prefix "RX"

Std= Standard roll set marked with the prefix "R"

C= Cut groove

See [publication 17.27](#) for recommended flange solutions for use on stainless steel pipe.

NOTES

- For pressure ratings on wall thicknesses not mentioned please contact Victaulic.
- Performance data is for ISO Types 304/304L and 316/316L stainless steel pipe with wall thicknesses from 1.6 – 12.5mm/0.063 – 0.492", depending on pipe size.

1.2 PERFORMANCE (CONTINUED)

Performance on ISO Wall Thicknesses



Style 89
Rigid Coupling



Style 07
Zero-Flex™
Rigid Coupling



Style 107N
QuickVic™
Rigid Coupling



Style 741
Vic-Flange Adapter

Size		Pipe Wall Thickness	Groove Type	Style 89		Style 07		Style 107N		Style 741	
Nominal DN inches	Actual Outside Diameter mm inches			Maximum Working Pressure kPa psi	Maximum End Load N Lbs.	Maximum Working Pressure kPa psi	Maximum End Load N Lbs.	Maximum Working Pressure kPa psi	Maximum End Load N Lbs.	Maximum Working Pressure kPa psi	Maximum End Load N Lbs.
DN40 1½	48.3 1.900	5.0 0.197	C	—	—	5171 750	9459 2126	—	—	—	—
		3.6 0.142	Std/C	—	—	5171 750	9459 2126	—	—	—	—
		3.2 0.126	Std	—	—	4137 600	7567 1701	—	—	—	—
		2.6 0.102	RX	—	—	3275 475	5991 1347	—	—	—	—
		2.0 0.079	RX	—	—	2930 425	5360 1205	—	—	—	—
		1.6 0.063	RX	—	—	2758 400	5045 1134	—	—	—	—
DN50 2	60.3 2.375	5.6 0.220	C	5171 750	14780 3323	5171 750	14780 3323	4137 600	11823 2658	1896 275	5419 1218
		4.0 0.157	Std/C	5171 750	14780 3323	5171 750	14780 3323	4137 600	11823 2658	1896 275	5419 1218
		3.6 0.142	Std	4654 675	13302 2990	4654 675	13302 2990	3620 525	10345 2326	1896 275	5419 1218
		3.2 0.126	Std	4137 600	11824 2658	4137 600	11824 2658	2758 400	7882 1772	1896 275	5419 1218
		2.9 0.114	Std	3620 525	10346 2326	3620 525	10346 2326	2241 325	6404 1440	1896 275	5419 1218
		2.6 0.102	RX	3275 475	9360 2104	3275 475	9360 2104	1896 275	5419 1218	1724 250	4927 1108
		2.3 0.091	RX	3275 475	8375 1883	3275 475	8375 1883	1793 260	5123 1152	1600 232	4572 1028
		2.0 0.079	RX	2586 375	7390 1661	2586 375	7390 1661	1600 232	4572 1028	1379 200	3941 886
		1.6 0.063	RX	2241 325	6405 1440	2241 325	6405 1440	1379 200	3941 886	1207 175	3449 775

— = Sizes not available

NR = Not rated. Contact Victaulic for more information.

RX= Roll Set for light wall stainless steel pipe marked with the prefix "RX"

Std= Standard roll set marked with the prefix "R"

C= Cut groove

See [publication 17.27](#) for recommended flange solutions for use on stainless steel pipe.

NOTES

- For pressure ratings on wall thicknesses not mentioned please contact Victaulic.
- Performance data is for ISO Types 304/304L and 316/316L stainless steel pipe with wall thicknesses from 1.6 – 12.5mm/0.063 – 0.492", depending on pipe size.

1.2 PERFORMANCE (CONTINUED)

Performance on ISO Wall Thicknesses



Style 89
Rigid Coupling



Style 07
Zero-Flex™
Rigid Coupling



Style 107N
QuickVic™
Rigid Coupling



Style 741
Vic-Flange Adapter

Size		Pipe Wall Thickness	Groove Type	Style 89		Style 07		Style 107N		Style 741	
Nominal DN inches	Actual Outside Diameter mm inches			Maximum Working Pressure kPa psi	Maximum End Load N Lbs.	Maximum Working Pressure kPa psi	Maximum End Load N Lbs.	Maximum Working Pressure kPa psi	Maximum End Load N Lbs.	Maximum Working Pressure kPa psi	Maximum End Load N Lbs.
DN65	76.1 3.000	7.1	C	5171	23582	5171	23582	4137	18865	1896	8646
		0.280	C	750	5301	750	5301	600	4241	275	1944
		6.4	C	5171	23582	5171	23582	4137	18865	1896	8646
		0.252	C	750	5301	750	5301	600	4241	275	1944
		5.0	Std/C	4482	20438	4482	20438	3964	18079	1896	8646
		0.197	Std/C	650	4595	650	4595	575	4064	275	1944
		4.0	Std	3964	18079	3964	18079	2930	13362	1896	8646
		0.157	Std	575	4064	575	4064	425	3004	275	1944
		3.6	Std	3792	17293	3792	17293	2586	11790	1896	8646
		0.142	Std	550	3888	550	3888	375	2651	275	1944
		3.1	Std	3450	15733	3450	15733	2068	9432	1896	8646
		0.122	Std	500	3537	500	3537	300	2121	275	1944
2.9	RX	3275	14935	3275	14935	1896	8646	1724	7861		
0.114	RX	475	3358	475	3358	275	1944	250	1767		
2.6	RX	2758	12577	2758	12577	1724	7860	1600	7295		
0.102	RX	400	2827	400	2827	250	1767	232	1640		
2.3	RX	2413	11005	2413	11005	1551	7074	1379	6288		
0.091	RX	350	2474	350	2474	225	1590	200	1414		
2.1	RX	2241	10220	2241	10220	1379	6288	1207	5502		
0.083	RX	325	2297	325	2297	200	1414	175	1237		
2.0	RX	2241	10220	2241	10220	1379	6288	1207	5502		
0.079	RX	325	2297	325	2297	200	1414	175	1237		

— = Sizes not available

NR = Not rated. Contact Victaulic for more information.

RX= Roll Set for light wall stainless steel pipe marked with the prefix "RX"

Std= Standard roll set marked with the prefix "R"

C= Cut groove

See [publication 17.27](#) for recommended flange solutions for use on stainless steel pipe.

NOTES

- For pressure ratings on wall thicknesses not mentioned please contact Victaulic.
- Performance data is for ISO Types 304/304L and 316/316L stainless steel pipe with wall thicknesses from 1.6 – 12.5mm/0.063 – 0.492", depending on pipe size.

1.2 PERFORMANCE (CONTINUED)

Performance on ISO Wall Thicknesses



Style 89
Rigid Coupling



Style 07
Zero-Flex™
Rigid Coupling



Style 107N
QuickVic™
Rigid Coupling



Style 741
Vic-Flange Adapter

Size		Pipe Wall Thickness	Groove Type	Style 89		Style 07		Style 107N		Style 741	
Nominal DN inches	Actual Outside Diameter mm inches			Maximum Working Pressure kPa psi	Maximum End Load N Lbs.	Maximum Working Pressure kPa psi	Maximum End Load N Lbs.	Maximum Working Pressure kPa psi	Maximum End Load N Lbs.	Maximum Working Pressure kPa psi	Maximum End Load N Lbs.
DN80 3	88.9 3.500	8.0	C	5171	32098	5171	32098	4137	25677	1896	11769
		0.315		750	7216	750	7216	600	5773	275	2646
		5.6	Std/C	5171	32098	5171	32098	4137	25677	1896	11769
		0.220		750	7216	750	7216	600	5773	275	2646
		4.0	Std	4137	25678	4137	25678	2930	18188	1896	11769
		0.157		600	5773	600	5773	425	4089	275	2646
		3.6	Std	3792	23538	3792	23538	2586	16048	1896	11769
		0.142		550	5292	550	5292	375	3608	275	2646
		3.2	Std	3450	21398	3450	21398	2241	13908	1896	11769
0.126	500	4811		500	4811	325	3127	275	2646		
2.9	RX	3275	21415	3275	21415	2068	12838	1724	10699		
0.114		475	4814	475	4814	300	2886	250	2405		
2.6	RX	2758	20328	2758	20328	1724	10699	1600	9929		
0.102		400	4570	400	4570	250	2405	232	2232		
2.3	RX	2413	14979	2413	14979	1551	9629	1379	8559		
0.091		350	3367	350	3367	225	2165	200	1924		
2.0	RX	2241	13910	2241	13910	1379	8559	1207	7489		
0.079		325	3127	325	3127	200	2405	175	1684		
DN100 4	114.3 4.500	8.8	C	5171	53059	5171	53059	4137	42445	1896	19454
		0.346		750	11928	750	11928	600	9543	275	4374
		6.3	C	5171	53059	5171	53059	4137	42445	1896	19454
		0.248		750	11928	750	11928	600	9543	275	4374
		4.5	Std	3964	40679	3964	40679	2930	30066	1896	19454
		0.177		575	9145	575	9145	425	6759	275	4374
		3.6	Std	3100	45985	3100	45985	2068	21223	1896	19454
		0.142		450	10338	450	10338	300	4771	275	4374
2.9	RX	2586	26530	2586	26530	1724	17686	1724	17686		
0.114		375	5964	375	5964	250	3976	250	3976		
2.6	RX	2241	22958	2241	22958	1551	15917	1600	16413		
0.102		325	5161	325	5161	225	3578	232	3690		
2.0	RX	1600	16417	1600	16417	1379	14148	1207	12380		
0.079		232	3691	232	3691	200	3181	175	2783		

— = Sizes not available

NR = Not rated. Contact Victaulic for more information.

RX= Roll Set for light wall stainless steel pipe marked with the prefix "RX"

Std= Standard roll set marked with the prefix "R"

C= Cut groove

See [publication 17.27](#) for recommended flange solutions for use on stainless steel pipe.

NOTES

- For pressure ratings on wall thicknesses not mentioned please contact Victaulic.
- Performance data is for ISO Types 304/304L and 316/316L stainless steel pipe with wall thicknesses from 1.6 – 12.5mm/0.063 – 0.492", depending on pipe size.

1.2 PERFORMANCE (CONTINUED)

Performance on ISO Wall Thicknesses



Style 89
Rigid Coupling



Style 07
Zero-Flex™
Rigid Coupling



Style 107N
QuickVic™
Rigid Coupling



Style 741
Vic-Flange Adapter

Size		Pipe Wall Thickness	Groove Type	Style 89		Style 07		Style 107N		Style 741	
Nominal DN inches	Actual Outside Diameter mm inches			Maximum Working Pressure kPa psi	Maximum End Load N Lbs.	Maximum Working Pressure kPa psi	Maximum End Load N Lbs.	Maximum Working Pressure kPa psi	Maximum End Load N Lbs.	Maximum Working Pressure kPa psi	Maximum End Load N Lbs.
DN125	139.7 5.500	10.0	C	5171	79261	5171	79261	4137	63406	1724	26420
		0.394		750	17819	750	17819	600	14255	250	5940
		7.1	C	5171	79261	5171	79261	4137	63406	1724	26420
		0.280		750	17819	750	17819	600	14255	250	5940
		6.6	C	517	79261	5171	79261	4137	63406	1724	26420
		0.260		750	17819	750	17819	600	14255	250	5940
		6.6	Std	5171	79261	3450	52881	4137	63406	1724	26420
		0.260		750	17819	500	11888	600	14255	250	5940
		6.3	Std/C	4826	73977	3275	50199	3275	50197	1600	24518
		0.248		700	16631	475	11285	475	11285	232	5512
		5.6	Std/C	4137	63409	3100	47557	3103	47555	1551	23778
		0.220		600	14255	450	10691	450	10691	225	5346
		5.0	Std	3620	55487	2758	42266	2758	42271	1379	21136
		0.197		525	12474	400	9502	400	9503	200	4752
		4.0	Std	2586	39631	2413	36989	2068	31703	1379	21136
		0.157		375	8909	350	8315	300	7127	200	4752
3.4	RX	2068	31652	2068	31652	2068	31703	1034	15852		
0.134		300	7116	300	7116	300	7127	150	3564		
3.2	RX	2068	31704	1896	29062	1551	23777	1034	15852		
0.126		300	7127	275	6534	225	5346	150	3564		
3.0	RX	1896	29062	1896	29062	1551	23777	N/R			
0.118		275	6534	275	6534	225	5346				
2.8	RX	1896	29062	1724	26420	1379	21135	862	13213		
0.110		275	6534	250	5940	200	4752	125	2970		
2.6	RX	1724	26420	1600	24518	N/R		N/R			
0.102		250	5940	232	5512						
2.0	RX	1600	35574	N/R		—		—			
0.079		232	7997								

— = Sizes not available

NR = Not rated. Contact Victaulic for more information.

RX= Roll Set for light wall stainless steel pipe marked with the prefix "RX"

Std= Standard roll set marked with the prefix "R"

C= Cut groove

See [publication 17.27](#) for recommended flange solutions for use on stainless steel pipe.

NOTES

- For pressure ratings on wall thicknesses not mentioned please contact Victaulic.
- Performance data is for ISO Types 304/304L and 316/316L stainless steel pipe with wall thicknesses from 1.6 – 12.5mm/0.063 – 0.492", depending on pipe size.

1.2 PERFORMANCE (CONTINUED)

Performance on ISO Wall Thicknesses



Style 89
Rigid Coupling



Style 07
Zero-Flex™
Rigid Coupling



Style 107N
QuickVic™
Rigid Coupling



Style 741
Vic-Flange Adapter

Size		Pipe Wall Thickness	Groove Type	Style 89		Style 07		Style 107N		Style 741	
Nominal DN inches	Actual Outside Diameter mm inches			Maximum Working Pressure kPa psi	Maximum End Load N Lbs.	Maximum Working Pressure kPa psi	Maximum End Load N Lbs.	Maximum Working Pressure kPa psi	Maximum End Load N Lbs.	Maximum Working Pressure kPa psi	Maximum End Load N Lbs.
DN150 6	168.3 6.625	11.0	C	5171	115003	5171	107306	4137	91998	1724	38334
		0.433	C	750	25854	700	24123	600	20683	250	8618
		7.1	C	5171	115003	5171	107306	4137	91998	1724	38334
		0.280	C	750	25854	700	24123	600	20683	250	8618
		7.1	Std	5171	115003	3100	68943	4137	91998	1034	22996
		0.280	Std	750	25854	450	15499	600	20683	150	5170
		5.0	Std	3450	76668	2068	46001	2068	45999	862	19167
		0.197	Std	500	17236	300	10341	300	10341	125	4309
		4.5	Std	3100	69002	1896	42168	2068	45999	862	19167
		0.177	Std	450	15512	275	9480	300	10341	125	4309
4.0	Std	2586	57501	1600	35583	2068	45999	862	19167		
0.157	Std	375	12927	232	7999	300	10341	125	4309		
3.2	RX	1896	42168	1204	26776	1207	26833	689	15334		
0.126	RX	275	9480	175	6020	175	6033	100	3447		
3.0	RX	1896	42168	1034	23001	1034	22999	N/R			
0.118	RX	275	9480	150	5171	150	5171	N/R			
2.6	RX	1600	35583	N/R		N/R		N/R			
0.102	RX	232	7999	N/R		N/R		N/R			
2.0	RX	1600	35574	N/R		N/R		N/R			
0.079	RX	232	7997	N/R		N/R		N/R			

— = Sizes not available

NR = Not rated. Contact Victaulic for more information.

RX= Roll Set for light wall stainless steel pipe marked with the prefix "RX"

Std= Standard roll set marked with the prefix "R"

C= Cut groove

See [publication 17.27](#) for recommended flange solutions for use on stainless steel pipe.

NOTES

- For pressure ratings on wall thicknesses not mentioned please contact Victaulic.
- Performance data is for ISO Types 304/304L and 316/316L stainless steel pipe with wall thicknesses from 1.6 – 12.5mm/0.063 – 0.492", depending on pipe size.

1.2 PERFORMANCE (CONTINUED)

Performance on ISO Wall Thicknesses



Style 89
Rigid Coupling



Style 07
Zero-Flex™
Rigid Coupling



Style 107N
QuickVic™
Rigid Coupling



Style 741
Vic-Flange Adapter

Size		Pipe Wall Thickness	Groove Type	Style 89		Style 07		Style 107N		Style 741	
Nominal DN inches	Actual Outside Diameter mm inches			Maximum Working Pressure kPa psi	Maximum End Load N Lbs.	Maximum Working Pressure kPa psi	Maximum End Load N Lbs.	Maximum Working Pressure kPa psi	Maximum End Load N Lbs.	Maximum Working Pressure kPa psi	Maximum End Load N Lbs.
DN200 8	219.1 8.625	12.5	C	4137	155903	4137	155935	2758	103952	1379	51978
		0.492		600	35049	600	35065	400	23371		
		8.0	Std/C	3964	149438	2758	103957	2758	103952	N/R	
		0.315		575	33595	400	23371	400	23371		
		6.5	Std/C	3275	123449	2068	77968	2068	77964		
		0.256		475	27752	300	17528	300	17528		
		6.3	Std/C	3100	116951	1896	71470	1896	71467		
		0.248		450	26292	275	16067	275	16067		
		5.0	Std	2586	97459	1379	51901	1379	51976		
		0.197		375	21910	200	11668	200	11685		
		4.0	Std	2241	84465	1034	38984	1034	38982		
		0.157		325	18989	150	8764	150	8764		
3.6	RX	1896	71470	793	29891	862	32485				
0.142		275	16067	115	6720	125	7303				
3.2	RX	1724	64973	689	25989	689	25988				
0.126		250	14607	100	5843	100	5843				
3.0	RX	1551	58476	517	19492	517	19491				
0.118		225	13146	75	4382	75	4382				
2.6	RX	1207	45481	N/R	N/R	N/R	N/R				
0.102		175	10225	N/R	N/R	N/R	N/R				
2.0	RX	1034	38984	N/R	N/R	N/R	N/R				
0.079		150	8746	N/R	N/R	N/R	N/R				

— = Sizes not available

NR = Not rated. Contact Victaulic for more information.

RX= Roll Set for light wall stainless steel pipe marked with the prefix "RX"

Std= Standard roll set marked with the prefix "R"

C= Cut groove

See [publication 17.27](#) for recommended flange solutions for use on stainless steel pipe.

NOTES

- For pressure ratings on wall thicknesses not mentioned please contact Victaulic.
- Performance data is for ISO Types 304/304L and 316/316L stainless steel pipe with wall thicknesses from 1.6 – 12.5mm/0.063 – 0.492", depending on pipe size.

1.2 PERFORMANCE (CONTINUED)

Performance on ISO Wall Thicknesses



Style 89
Rigid Coupling



Style 07
Zero-Flex™
Rigid Coupling



Style 107N
QuickVic™
Rigid Coupling



Style 741
Vic-Flange Adapter

Size		Pipe Wall Thickness	Groove Type	Style 89		Style 07		Style 107N		Style 741	
Nominal DN inches	Actual Outside Diameter mm inches			Maximum Working Pressure kPa psi	Maximum End Load N Lbs.	Maximum Working Pressure kPa psi	Maximum End Load N Lbs.	Maximum Working Pressure kPa psi	Maximum End Load N Lbs.	Maximum Working Pressure kPa psi	Maximum End Load N Lbs.
DN250 10	273.0 10.750	14.2	C	4137	242188	3450	202019	2068	121114	1379	80746
		0.559		600	54446						
		12.5	C	4137	242188	3450	202019	2068	121114	1379	80746
		0.492		600	54446						
		10.0	C	4137	242188	3450	202019	2068	121114	1379	80746
		0.394		600	54446						
		6.3	Std/C	2930	171585	1204	70653	1207	70650	—	
		0.248		425	38574						175
		4.0	RX	2068	121119	517	30280	517	30278		
		0.157		300	27229						75
3.6	RX	1724	10093	345	20187	345	20186				
0.142		250	22691					50	4538		50
3.2	RX	1600	93690	N/R		N/R	N/R				
0.126		232	21062	N/R		N/R	N/R				
3.0	RX	1379	80746	N/R		N/R	N/R				
0.118		200	18153	N/R		N/R	N/R				
2.6	RX	1034	60560	N/R		N/R	N/R				
0.102		150	13614	N/R		N/R	N/R				
2.0	RX	689	40373	N/R		N/R	N/R				
0.079		100	9076	N/R		N/R	N/R				
DN300 12	323.9 12.750	12.5	C	4137	340687	2758	227172	2068	170371	1379	113586
		0.492		600	76590						
		10.0	C	4137	340687	400	227172	2068	170371	1379	113586
		0.394		600	76590						
		7.1	Std/C	3100	255568	1379	113586	2068	170371	—	
		0.280		450	57454						200
		5.0	RX	2241	184577	1034	85189	862	70988		
0.197	325	41495		150	19151						125
4.5	RX	2068	170379	862	70991	689	56790				
0.177		300	38303					125	15960		100
4.0	RX	1379	113590	517	42586	517	42593				
0.157		200	25536					75	9574	75	9576

— = Sizes not available

NR = Not rated. Contact Victaulic for more information.

RX= Roll Set for light wall stainless steel pipe marked with the prefix "RX"

Std= Standard roll set marked with the prefix "R"

C= Cut groove

See [publication 17.27](#) for recommended flange solutions for use on stainless steel pipe.

NOTES

- For pressure ratings on wall thicknesses not mentioned please contact Victaulic.
- Performance data is for ISO Types 304/304L and 316/316L stainless steel pipe with wall thicknesses from 1.6 – 12.5mm/0.063 – 0.492", depending on pipe size.

1.2 PERFORMANCE (CONTINUED)

Performance on ISO Wall Thicknesses



Style 77
Flexible Coupling



Style 75
Flexible Coupling



Style 177N
QuickVic™ Flexible Coupling

Size		Pipe Wall Thickness	Groove Type	Style 77		Style 75		Style 177N	
Nominal DN inches	Actual Outside Diameter mm inches			Maximum Working Pressure kPa psi	Maximum End Load N Lbs.	Maximum Working Pressure kPa psi	Maximum End Load N Lbs.	Maximum Working Pressure kPa psi	Maximum End Load N Lbs.
DN20 ¾	26.9 1.050	4.0	C	5171	2889	—	—	—	—
		0.157		750	649	—	—	—	—
		3.2	C	5171	2889	—	—	—	—
		0.126		750	649	—	—	—	—
		2.6	Std/C	4482	2504	—	—	—	—
0.102	0.102	2.0	RX	650	563	—	—	—	—
				3450	1927	—	—	—	—
				500	433	—	—	—	—
DN25 1	33.7 1.315	4.5	C	5171	4531	—	—	—	—
		0.177		750	1019	—	—	—	—
		3.2	Std	4313	3779	—	—	—	—
		0.126		625	849	—	—	—	—
		2.6	RX	3275	2870	—	—	—	—
		0.102		475	645	—	—	—	—
		2.3	RX	3100	2719	—	—	—	—
0.091	0.091	2.0	RX	450	611	—	—	—	—
				2930	2568	—	—	—	—
				425	577	—	—	—	—
				2758	2416	—	—	—	—
				400	543	—	—	—	—
DN32 1¼	42.4 1.660	5.0	C	5171	7220	—	—	—	—
		0.197		750	1623	—	—	—	—
		3.6	Std/C	5171	7220	—	—	—	—
		0.142		750	1623	—	—	—	—
		3.2	Std	4313	6021	—	—	—	—
		0.126		625	1354	—	—	—	—
		2.6	RX	3275	4573	—	—	—	—
		0.102		475	1028	—	—	—	—
0.079	0.079	2.0	RX	2930	4091	—	—	—	—
				425	920	—	—	—	—
				2758	3851	—	—	—	—
0.063	0.063	1.6	RX	400	866	—	—	—	—

— = Sizes not available

NR = Not rated. Contact Victaulic for more information.

RX= Roll Set for light wall stainless steel pipe marked with the prefix "RX"

Std= Standard roll set marked with the prefix "R"

C= Cut groove

NOTE

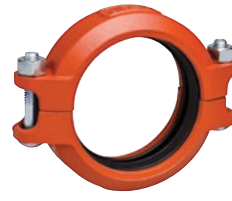
- For pressure ratings on wall thicknesses not mentioned please contact Victaulic.
- Performance data is for ISO Types 304/304L and 316/316L stainless steel pipe with wall thicknesses from 1.6 – 12.5mm/0.063 – 0.492", depending on pipe size.

1.2 PERFORMANCE (CONTINUED)

Performance on ISO Wall Thicknesses



Style 77
Flexible Coupling



Style 75
Flexible Coupling



Style 177N
QuickVic™ Flexible Coupling

Size		Pipe Wall Thickness	Groove Type	Style 77		Style 75		Style 177N	
Nominal DN inches	Actual Outside Diameter mm inches			Maximum Working Pressure kPa psi	Maximum End Load N Lbs.	Maximum Working Pressure kPa psi	Maximum End Load N Lbs.	Maximum Working Pressure kPa psi	Maximum End Load N Lbs.
DN40 1½	48.3 1900	5.0	C	5171	9459	6311	6311	—	—
		0.197		750	2126	500	1419	—	—
		3.6	Std/C	5171	9459	3450	6311	—	—
		0.142		750	2126	500	1419	—	—
		3.2	Std	4137	7567	3450	6311	—	—
		0.126		600	1701	500	1419	—	—
		2.6	RX	3275	5991	3275	5991	—	—
0.102	475	1347		475	1347	—	—		
2.0	RX	2930	5360	2930	5360	—	—		
0.079		425	1205	425	1205	—	—		
1.6	RX	2758	5045	2758	5045	—	—		
0.063		400	1134	400	1134	—	—		
DN50 2	60.3 2.375	5.6	C	5171	14780	3450	9861	5171	14779
		0.220		750	3323	500	2217	750	3323
		4.0	Std/C	5171	14780	3450	9861	5171	14779
		0.157		750	3323	500	2217	750	3323
		3.6	Std	4654	13302	3275	9360	4654	13301
		0.142		675	2990	475	2104	675	2990
		3.2	Std	4137	11824	2930	8375	4137	11823
		0.126		600	2658	425	1883	600	2658
		2.9	Std	3620	10346	2758	7882	3620	10345
		0.114		525	2326	400	1772	525	2326
		2.6	RX	3275	9360	2586	7390	3275	9360
		0.102		475	2104	375	1661	475	2104
		2.3	RX	2930	8375	2241	6404	2930	8375
0.091	425	1883		325	1440	425	1883		
2.0	RX	2586	7390	2068	5912	2586	7389		
0.079		375	1661	300	1329	375	1661		
1.6	RX	2241	6405	1724	4930	2241	6404		
0.063		325	1440	250	1108	325	1440		

— = Sizes not available

NR = Not rated. Contact Victaulic for more information.

RX= Roll Set for light wall stainless steel pipe marked with the prefix "RX"

Std= Standard roll set marked with the prefix "R"

C= Cut groove

NOTE

- For pressure ratings on wall thicknesses not mentioned please contact Victaulic.
- Performance data is for ISO Types 304/304L and 316/316L stainless steel pipe with wall thicknesses from 1.6 – 12.5mm/0.063 – 0.492", depending on pipe size.

1.2 PERFORMANCE (CONTINUED)

Performance on ISO Wall Thicknesses



Style 77
Flexible Coupling



Style 75
Flexible Coupling



Style 177N
QuickVic™ Flexible Coupling

Size		Pipe Wall Thickness	Groove Type	Style 77		Style 75		Style 177N	
Nominal DN inches	Actual Outside Diameter mm inches			Maximum Working Pressure kPa psi	Maximum End Load N Lbs.	Maximum Working Pressure kPa psi	Maximum End Load N Lbs.	Maximum Working Pressure kPa psi	Maximum End Load N Lbs.
DN65	76.1 3.000	7.1 0.280	C	5171 750	23582 5301	3450 500	15733 3537	4826 700	22009 4948
		6.4 0.252	C	5171 750	23582 5301	3450 500	15733 3537	4826 700	22009 4948
		5.0 0.197	Std/C	4482 650	20438 4595	3100 450	14149 3181	4482 650	20437 4595
		4.0 0.157	Std	3964 575	18079 4064	2930 425	13363 3004	3620 525	16507 3711
		3.6 0.142	Std	3792 550	17293 9888	2930 425	13363 3004	3275 475	14935 3358
		3.1 0.122	Std	3450 500	15733 3537	2758 400	12577 2827	2758 400	12576 2827
		2.9 0.114	RX	3275 475	14935 3358	2586 375	11791 2651	2586 375	11790 2651
		2.6 0.102	RX	2930 425	13363 3004	2241 325	10204 2294	2413 350	11004 2474
		2.3 0.091	RX	2413 350	11005 2474	1896 275	8647 1944	2068 300	9432 2121
		2.1 0.083	RX	2241 325	10220 2297	1724 250	7867 1768	2068 300	9432 2121
		2.0 0.079	RX	2241 325	10220 2297	1724 250	7867 1768	1724 250	7860 1767

— = Sizes not available

NR = Not rated. Contact Victaulic for more information.

RX= Roll Set for light wall stainless steel pipe marked with the prefix "RX"

Std= Standard roll set marked with the prefix "R"

C= Cut groove

NOTE

- For pressure ratings on wall thicknesses not mentioned please contact Victaulic.
- Performance data is for ISO Types 304/304L and 316/316L stainless steel pipe with wall thicknesses from 1.6 – 12.5mm/0.063 – 0.492", depending on pipe size.

1.2 PERFORMANCE (CONTINUED)

Performance on ISO Wall Thicknesses



Style 77
Flexible Coupling



Style 75
Flexible Coupling



Style 177N
QuickVic™ Flexible Coupling

Size		Pipe Wall Thickness	Groove Type	Style 77		Style 75		Style 177N	
Nominal DN inches	Actual Outside Diameter mm inches			Maximum Working Pressure kPa psi	Maximum End Load N Lbs.	Maximum Working Pressure kPa psi	Maximum End Load N Lbs.	Maximum Working Pressure kPa psi	Maximum End Load N Lbs.
DN80 3	88.9 3.500	8.0	C	5171	32098	3450	21415	4826	29956
		0.315		750	7216	500	4824	700	6735
		5.6	Std/C	5171	32098	3450	21415	4826	29956
		0.220		750	7216	500	4824	700	6735
		4.0	Std	4137	25678	3100	19259	3447	21397
		0.157		600	5773	450	4330	500	4811
		3.6	Std	3792	23538	2930	18189	3103	19258
		0.142		550	5292	425	4089	450	4330
		3.2	Std	3450	21398	2758	17119	2758	17118
		0.126		500	4811	400	3848	400	3848
2.9	RX	3275	20328	2586	16049	2413	14978		
0.114		475	4570	375	3608	350	3367		
2.6	RX	2930	18189	2241	13888	2241	13908		
0.102		425	4089	325	3122	325	3127		
2.3	RX	2413	14979	1896	11769	2068	12838		
0.091		350	3367	275	2646	300	2886		
2.0	RX	2241	13910	1724	10707	1724	10699		
0.079		325	3127	250	2407	250	2405		
DN100 4	114.3 4.500	8.8	C	5171	53059	3450	35400	4137	42445
		0.346		750	11928	500	7958	600	9543
		6.3	C	5171	53059	3450	35400	4137	42445
		0.248		750	11928	500	7958	600	9543
		4.5	Std	3964	40679	2758	28298	3103	31834
		0.177		575	9145	400	6362	450	7157
		3.6	Std	3100	31836	2241	22992	2413	24760
		0.142		450	7157	325	5169	350	5567
		2.9	RX	2586	26530	1896	19455	1724	17686
		0.114		375	5964	275	4374	250	3976
2.6	RX	2241	22958	1724	17686	1724	17686		
0.102		325	5161	250	3976	250	3976		
2.0	RX	1724	17700	1379	14149	1379	14148		
0.079		250	3979	200	3181	200	3181		

— = Sizes not available

NR = Not rated. Contact Victaulic for more information.

RX= Roll Set for light wall stainless steel pipe marked with the prefix "RX"

Std= Standard roll set marked with the prefix "R"

C= Cut groove

NOTE

- For pressure ratings on wall thicknesses not mentioned please contact Victaulic.
- Performance data is for ISO Types 304/304L and 316/316L stainless steel pipe with wall thicknesses from 1.6 – 12.5mm/0.063 – 0.492", depending on pipe size.

1.2 PERFORMANCE (CONTINUED)

Performance on ISO Wall Thicknesses



Style 77
Flexible Coupling



Style 75
Flexible Coupling



Style 177N
QuickVic™ Flexible Coupling

Size		Pipe Wall Thickness	Groove Type	Style 77		Style 75		Style 177N	
Nominal DN inches	Actual Outside Diameter mm inches			Maximum Working Pressure kPa psi	Maximum End Load N Lbs.	Maximum Working Pressure kPa psi	Maximum End Load N Lbs.	Maximum Working Pressure kPa psi	Maximum End Load N Lbs.
DN125	139.7 5.500	10.0 0.394	C	5171 750	79261 17819	3100 450	47516 10682	3447 500	52838 11879
		7.1 0.280	C	5171 750	79261 17819	3100 450	47516 10682	3447 500	52838 11879
		6.6 0.260	Std	5171 750	79261 17819	3100 450	47516 10682	3447 500	52838 11879
		6.6 0.260	C	3450 500	52881 11888	2068 300	31652 7116	3447 500	52838 11879
		6.3 0.248	Std/C	3275 475	50199 11285	2068 300	31704 7127	3275 475	50197 11285
		5.6 0.220	Std/C	3100 450	47557 10691	1896 275	29062 6534	3103 450	47555 10691
		5.0 0.197	Std	2758 400	42266 9502	1724 250	26420 5940	2413 350	36987 8315
		4.0 0.157	Std	2241 325	34347 7721	1551 225	23778 5346	1724 250	26419 5940
		3.4 0.134	RX	2068 300	31652 7116	1379 200	21136 4752	1379 200	21135 4752
		3.2 0.126	RX	1896 275	29062 6534	1204 175	18455 4149	1207 175	18493 4158
		3.0 0.118	RX	1896 275	29062 6534	1034 150	15852 3564	1034 150	15852 3564
		2.8 0.110	RX	1724 250	26420 5940	862 125	13213 2970	1034 150	15852 3564
		2.6 0.102	RX	1600 232	24525 5513	N/R		N/R	

— = Sizes not available

NR = Not rated. Contact Victaulic for more information.

RX= Roll Set for light wall stainless steel pipe marked with the prefix "RX"

Std= Standard roll set marked with the prefix "R"

C= Cut groove

NOTE

- For pressure ratings on wall thicknesses not mentioned please contact Victaulic.
- Performance data is for ISO Types 304/304L and 316/316L stainless steel pipe with wall thicknesses from 1.6 – 12.5mm/0.063 – 0.492", depending on pipe size.

1.2 PERFORMANCE (CONTINUED)

Performance on ISO Wall Thicknesses



Style 77
Flexible Coupling



Style 75
Flexible Coupling



Style 177N
QuickVic™ Flexible Coupling

Size		Pipe Wall Thickness	Groove Type	Style 77		Style 75		Style 177N	
Nominal DN inches	Actual Outside Diameter mm inches			Maximum Working Pressure kPa psi	Maximum End Load N Lbs.	Maximum Working Pressure kPa psi	Maximum End Load N Lbs.	Maximum Working Pressure kPa psi	Maximum End Load N Lbs.
DN150 6	168.3 6.625	11.0	C	5171	115003	3100	68943	3447	76665
		0.433		750	25854	450	15499	500	17236
		7.1	Std/C	5171	115003	3100	68943	3447	76665
		0.280		750	25854	450	15499	500	17236
		7.1	C	3450	76727	2068	45925	3447	76665
		0.280		500	17249	300	10324	500	17236
		5.0	Std	2241	49834	1379	30740	2068	45999
		0.197		325	11203	200	6911	300	10341
		4.5	Std	1896	42219	1204	26834	1724	38332
		0.177		275	9491	175	6033	250	8618
4.0	Std	1600	35583	1204	23001	1379	30666		
0.157		232	7999	150	5171	200	6894		
3.2	RX	1375	26776	689	15334	827	18400		
0.126		199	6020	100	3447	120	4137		
3.0	RX	1034	23001	517	11500	689	15333		
0.118		150	5171	75	2585	100	3447		
DN200 8	219.1 8.625	12.5	C	4137	155935	3100	116852	2758	103952
		0.492		600	35056	450	26269	400	23371
		8.0	Std/C	2586	97459	2068	77968	2758	103952
		0.315		375	21910	300	17528	400	23371
		6.5	Std/C	2068	77968	1551	58476	2068	77964
		0.256		300	17528	225	13146	300	17528
		6.3	Std/C	1896	71470	1379	51978	1896	71467
		0.248		275	16067	200	11685	275	16067
		5.0	Std	1379	51901	862	32486	1379	51976
		0.197		200	11668	125	7303	200	11685
		4.0	Std	862	32486	517	19492	862	32485
		0.157		125	7303	75	4382	125	7303
		3.6	RX	689	25989	517	19492	689	25988
0.142	100	5843		75	4382	100	5843		
3.2	RX	689	25989	345	12995	689	25988		
0.126		100	5843	50	2921	100	5843		
3.0	RX	517	19492	345	12995	517	19491		
0.118		75	4382	50	2921	75	4382		

— = Sizes not available

NR = Not rated. Contact Victaulic for more information.

RX= Roll Set for light wall stainless steel pipe marked with the prefix "RX"

Std= Standard roll set marked with the prefix "R"

C= Cut groove

NOTE

- For pressure ratings on wall thicknesses not mentioned please contact Victaulic.
- Performance data is for ISO Types 304/304L and 316/316L stainless steel pipe with wall thicknesses from 1.6 – 12.5mm/0.063 – 0.492", depending on pipe size.

1.2 PERFORMANCE (CONTINUED)

Performance on ISO Wall Thicknesses



Style 77
Flexible Coupling



Style 75
Flexible Coupling



Style 177N
QuickVic™ Flexible Coupling

Size		Pipe Wall Thickness	Groove Type	Style 77		Style 75		Style 177N	
Nominal DN inches	Actual Outside Diameter mm inches			Maximum Working Pressure kPa psi	Maximum End Load N Lbs.	Maximum Working Pressure kPa psi	Maximum End Load N Lbs.	Maximum Working Pressure kPa psi	Maximum End Load N Lbs.
DN250 10	273.0 10.750	14.2	C	4137	242238	—	—	—	—
		0.559		600	54458	—	—	—	—
		12.5	C	4137	242238	—	—	—	—
		0.492		600	54458	—	—	—	—
		10.0	C	4137	242238	—	—	—	—
		0.394		600	54458	—	—	—	—
DN300 12	323.9 12.750	6.3	Std/C	1600	93665	—	—	—	—
		0.248		232	21057	—	—	—	—
		4.0	RX	689	40373	—	—	—	—
		0.157		100	9076	—	—	—	—
		3.6	RX	517	30280	—	—	—	—
		0.142		75	6807	—	—	—	—
DN300 12	323.9 12.750	12.5	C	4137	340758	—	—	—	—
		0.492		600	76606	—	—	—	—
		10.0	C	4137	340758	—	—	—	—
		0.394		600	76606	—	—	—	—
		7.1	Std/C	1724	141982	—	—	—	—
		0.280		250	31919	—	—	—	—
DN300 12	323.9 12.750	5.0	RX	1034	85189	—	—	—	—
		0.197		150	19151	—	—	—	—
		4.5	RX	862	70991	—	—	—	—
		0.177		125	15960	—	—	—	—
DN300 12	323.9 12.750	4.0	RX	517	42586	—	—	—	—
		0.157		75	9574	—	—	—	—

— = Sizes not available

NR = Not rated. Contact Victaulic for more information.

RX= Roll Set for light wall stainless steel pipe marked with the prefix "RX"

Std= Standard roll set marked with the prefix "R"

C= Cut groove

NOTE

- For pressure ratings on wall thicknesses not mentioned please contact Victaulic.
- Performance data is for ISO Types 304/304L and 316/316L stainless steel pipe with wall thicknesses from 1.6 – 12.5mm/0.063 – 0.492", depending on pipe size.

2.0 NOTIFICATIONS

WARNING

- Victaulic RX roll sets must be used when grooving light-wall/thin-wall stainless steel pipe for use with Victaulic Couplings.

Failure to use Victaulic RX roll sets when grooving light-wall/thin-wall stainless steel pipe may cause joint failure, resulting in serious personal injury and/or property damage.

NOTICE

- Victaulic RX grooving rolls must be ordered separately. They are identified by a silver color and the designation RX on the front of the roll sets.

WARNING



- Read and understand all instructions before attempting to install, remove, adjust, or maintain any Victaulic piping products.
- Depressurize and drain the piping system before attempting to install, remove, adjust, or maintain any Victaulic piping products.
- Wear safety glasses, hardhat, and foot protection.
- A Victaulic flexible coupling (not included) must also be installed in the piping above the Series 383 Discharge CBV Isolation Pump Drop when using a vertical configuration with no reduction in pipe size.

Failure to follow these instructions could result in death or serious personal injury and property damage.

3.0 REFERENCE MATERIALS

Product	Product Type	Size Range
Style 89	Rigid Coupling	2 – 12"/DN50 – DN300
Style 07	Rigid Coupling	1 – 12"/DN25 – DN300
Style 107N	Rigid Coupling	2 – 12"/DN50 – DN300
Style 77	Flexible Coupling	¾ – 12"/DN20 – DN300
Style 75	Flexible Coupling	1 ½ – 8"/DN40 – DN200
Style 177N	Flexible Coupling	2 – 8"/DN50 – DN200
Style 78	Snap-Joint Coupling	2 – 8"/DN50 – DN200

Product	Product Type	Size Range
Style 791	Boltless Coupling	2 – 8"/DN50 – v200
Style 741	Flange Adapter	2 – 12"/DN50 – DN300
Style 743	Flange Adapter	2 – 12"/DN50 – DN300
Style W89	Rigid Coupling	14 – 24"/DN350 – DN600
Style W07	Rigid Coupling	14 – 24"/DN350 – DN600
Style W77	Flexible Coupling	14 – 24"/DN350 – DN600

- [06.02: Victaulic® Zero-Flex Rigid Coupling Style 07](#)
- [06.04: Victaulic® Standard Flexible Coupling Style 77](#)
- [06.05: Victaulic® Flexible Coupling Style 75](#)
- [06.06: Victaulic® Vic-Flange® Adapters Styles 741 and 743](#)
- [06.09: Victaulic® Snap-Joint® Coupling](#)
- [06.11: Victaulic® Vic-Boltless® Coupling](#)
- [06.23: Victaulic® QuickVic™ Rigid Coupling Style 107N](#)
- [06.24: Victaulic® QuickVic™ Flexible Coupling Style 177N](#)
- [17.01: Victaulic® Stainless Steel Pipe End Preparation](#)
- [17.07: Victaulic® Rigid Coupling Style 89](#)
- [20.02: Victaulic® AGS Rigid Coupling Style W07](#)
- [20.03: Victaulic® AGS Flexible Coupling Style W77](#)
- [20.15: Victaulic® AGS Rigid Coupling for Stainless Steel or Carbon Steel Style W89](#)

User Responsibility for Product Selection and Suitability

Each user bears final responsibility for making a determination as to the suitability of Victaulic products for a particular end-use application, in accordance with industry standards and project specifications, and the applicable building codes and related regulations as well as Victaulic performance, maintenance, safety, and warning instructions. Nothing in this or any other document, nor any verbal recommendation, advice, or opinion from any Victaulic employee, shall be deemed to alter, vary, supersede, or waive any provision of Victaulic Company's standard conditions of sale, installation guide, or this disclaimer.

Intellectual Property Rights

No statement contained herein concerning a possible or suggested use of any material, product, service, or design is intended, or should be construed, to grant any license under any patent or other intellectual property right of Victaulic or any of its subsidiaries or affiliates covering such use or design, or as a recommendation for the use of such material, product, service, or design in the infringement of any patent or other intellectual property right. The terms "Patented" or "Patent Pending" refer to design or utility patents or patent applications for articles and/or methods of use in the United States and/or other countries.

Note

This product shall be manufactured by Victaulic or to Victaulic specifications. All products to be installed in accordance with current Victaulic installation/assembly instructions. Victaulic reserves the right to change product specifications, designs and standard equipment without notice and without incurring obligations.

Installation

Reference should always be made to the Victaulic installation handbook or installation instructions of the product you are installing. Handbooks are included with each shipment of Victaulic products, providing complete installation and assembly data, and are available in PDF format on our website at www.victaulic.com.

Warranty

Refer to the Warranty section of the current Price List or contact Victaulic for details.

Trademarks

Victaulic and all other Victaulic marks are the trademarks or registered trademarks of Victaulic Company, and/or its affiliated entities, in the U.S. and/or other countries.