

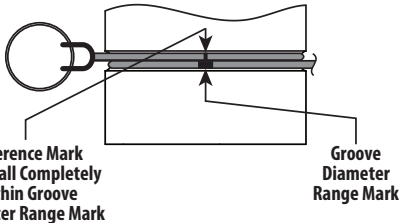
GDC-PGS-300 Go/No-Go Groove Diameter Cable for Cut-Grooved PVC and CPVC Pipe

WARNING

- Read and understand all instructions before attempting to use this go/no-go groove diameter cable.
- Wear safety glasses, hardhat, foot protection, and hearing protection when working with Victaulic grooving tools.
- Verify that the outside diameter of the pipe is within Victaulic specifications.
- After grooving, verify that all diameters are measured in accordance with Victaulic specifications.
- Installation and pressurization of grooved pipe that does not conform to Victaulic specifications could cause joint failure, resulting in death or serious personal injury and property damage.

NOTICE

- THE GDC-PGS-300 GROOVE DIAMETER CABLE IS NOT A REPLACEMENT FOR A ROUTINELY CALIBRATED DIAMETER MEASURING INSTRUMENT AND PROPER INSPECTION PROCEDURES. THIS GROOVE DIAMETER CABLE SHALL BE USED ONLY AS AN AID FOR CHECKING GROOVE DIAMETERS. A MEASURING INSTRUMENT THAT IS ROUTINELY CALIBRATED TO TRACEABLE STANDARDS IS RECOMMENDED FOR THE MOST ACCURATE GROOVE DIMENSION MEASUREMENT.
- The GDC-PGS-300 contains go/no-go markings and shall be used ONLY to check pipe that is prepared to the specifications and pipe sizes listed in this instruction sheet. DO NOT use the GDC-PGS-300 to check pipe grooved to any other specifications.

**CHECK GROOVE DIAMETER:**

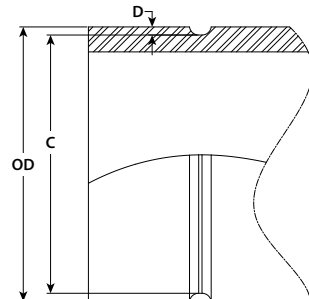
Remove all loose dirt, scale, and paint from the groove and gasket sealing surface. Wrap the cable around the pipe groove and overlap the two ends, as shown. Verify that the cable seats in the base of the groove.

Firmly pull on each end of the overlapped cable. Determine if the reference mark is completely within the groove diameter range mark for the applicable pipe size.

The reference mark must be completely within the groove diameter range mark for conformance to Victaulic specifications.

PGS-300 Specifications for Cut-Grooved PVC and CPVC Pipe

Nominal Size inches	Actual Pipe Outside Diameter "OD" inches/mm	Dimensions - inches/mm		
		Groove Diameter "C"		Groove Depth "D" (Reference)
		Maximum	Minimum	
2	2.375	2.235	2.220	0.07
	60.3	56.8	56.4	1.8
2½	2.875	2.695	2.677	0.09
	73.0	68.5	68.0	2.3
3	3.500	3.320	3.302	0.09
	88.9	84.3	83.9	2.3
4	4.500	4.320	4.300	0.09
	114.3	109.7	109.2	2.3
6	6.625	6.345	6.323	0.14
	168.3	161.2	160.6	3.6
8	8.625	8.305	8.280	0.16
	219.1	211.0	210.3	4.1
10	10.750	10.390	10.363	0.18
	273.0	263.9	263.2	4.6
12	12.750	12.390	12.360	0.18
	323.9	314.7	313.9	4.6



For complete contact information, visit victaulic.com
I-GDC-PGS-300 10511 REV A UPDATED 01/2017 Z000GDC300

VICTAULIC IS A REGISTERED TRADEMARK OF VICTAULIC COMPANY AND/OR ITS AFFILIATED ENTITIES IN THE UNITED STATES AND/OR OTHER COUNTRIES. © 2017 VICTAULIC COMPANY. ALL RIGHTS RESERVED.

