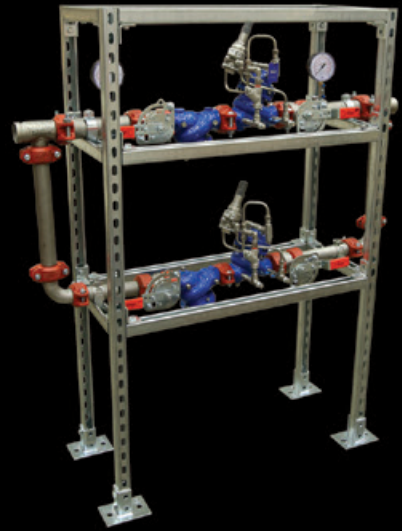




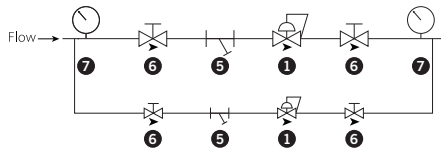
SERIES 386

PRV STATION SCHEMATICS



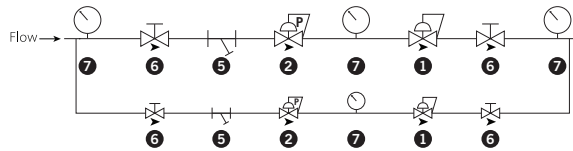
Series 386A

Single Stage PRV Station with Low-Flow Bypass



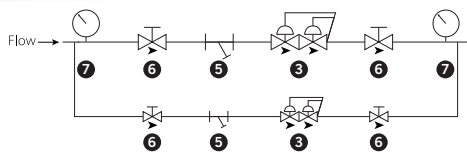
Series 386B

Two Stage PRV Station with Low-Flow Bypass



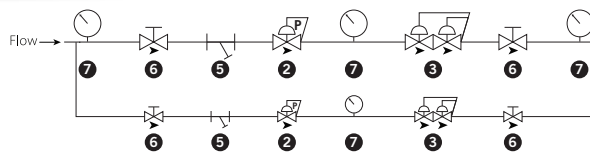
Series 386C

Single Stage PRV Station with Low-Flow Bypass and "Watchdog" Combination



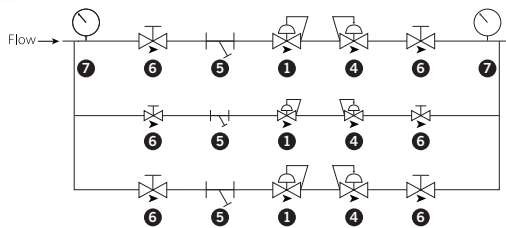
Series 386D

Two Stage PRV Station with Low-Flow Bypass and "Watchdog" Combination



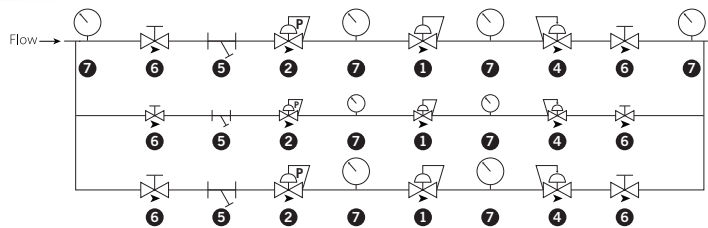
Series 386E

Single Stage PRV Station with Low-Flow Bypass, Redundant Branch and Excessive Pressure Shut-Off Valve



Series 386F

Two Stage PRV Station with Low-Flow Bypass, Redundant Branch and Excessive Pressure Shut-Off Valve



victaulic.com

PB-PRVSTATION 11079 REV A 07/2017

Victaulic and all other Victaulic marks are the trademarks or registered trademarks of Victaulic Company, and/or its affiliated entities, in the U.S. and/or other countries. All other trademarks listed herein are the property of their respective holders, in the U.S. and/or other countries. The terms "Patented" or "Patent Pending" refer to design or utility patents or patent applications for articles and/or methods of use in the United States and/or other countries.

© 2017 VICTAULIC COMPANY. ALL RIGHTS RESERVED.

Symbol	Model or Valve Combo
1	Series 972 Pressure Reducing Valve
2	Series 972-PD Proportional Pressure Reducing Valve
3	Series 972S-H Watchdog Combination
4	Series 979-4 Excessive Pressure Shut-Off Valve
5	Series 968-F Strainer
6	Series 461 Butterfly Valve for Isolation
7	Pressure Gauge